

states that it is quite clear that a considerable increase in the number of beds is necessary, but its income does not at present justify it in dealing with this matter.

Mention must be made of the aprons worn in the theatre by students and other visitors who are witnessing operations. They are in the form of a sleeveless surplice buttoned behind, so no unprepared hands can in a moment of emergency, impelled by a well meant but not well judged impulse, touch anything connected with an operation.

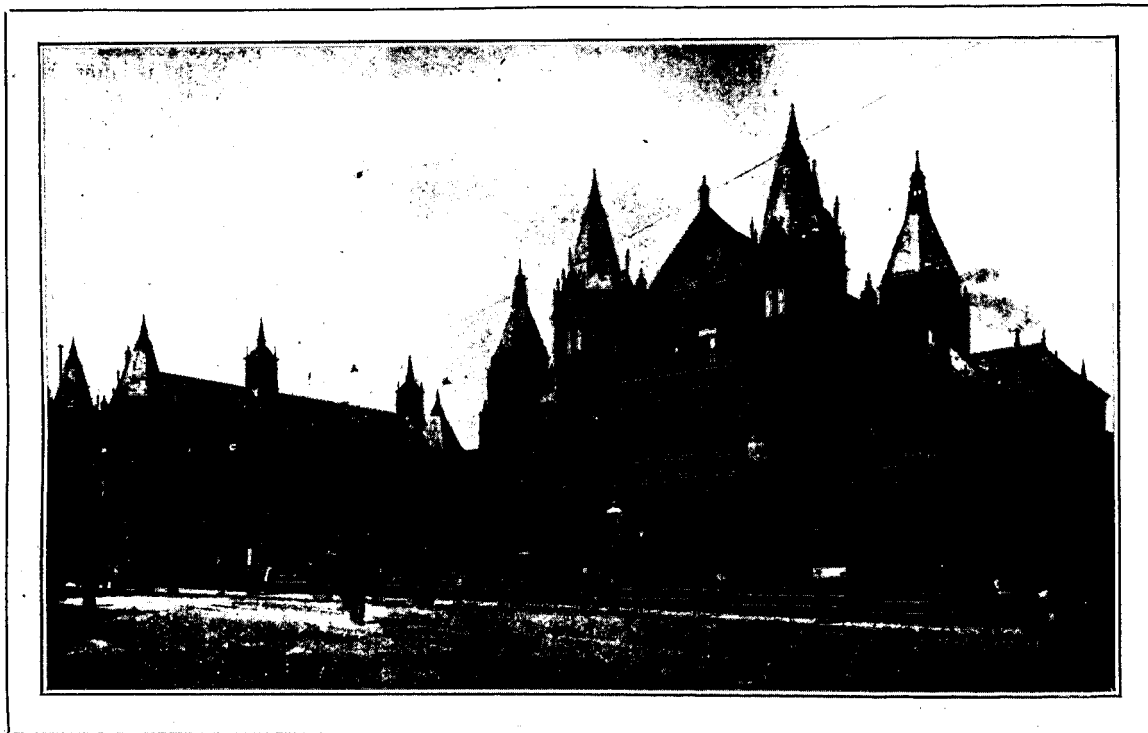
The kitchen of the hospital is specially admirable. Located at the top of the building, white tiled and provided with sculleries and serving rooms, and with every necessary appliance it is a model of what such a department should be.

prepared for a strike should one occur again, as some anxiety was felt on the last occasion as to whether the supply would hold out, so this is to be obviated in future.

Mention must be made of the fine conservatory connecting the hospital and the Nurses' Home, and where nurses when off duty can see their friends. The plenum system is not installed in the Nurses' Home.

The General Hospital, Birmingham, ranks high as a nurse training school, and many of its former pupils are holding influential positions.

Probationers are received between the ages of 21 and 35, they must be well educated, and are required to produce a satisfactory certificate of health. The engagement, upon payment of a fee of £21, is for three years; otherwise the probationer



THE GENERAL HOSPITAL, BIRMINGHAM.

There are ventilated larders where fresh meat is hung, others for bread piled in wooden racks, and for milk submitted to careful tests. The room where the stores for cleaning purposes are kept must be the joy of the housekeeper's heart, as also that for groceries, flour, sugar, jam, pickles, eggs, and other necessary articles. The department is under the control of the Matron and her Assistant, and a very important branch of her work, when health of patients and staff alike depends to a great extent on successful catering.

Passing along a corridor one noticed considerable excavations, and on enquiring the reason, found that it was in order to increase the already large storage accommodation for coal, so as to be

undertakes to serve for one year after gaining her certificate.

A salary is given of £6 the first year; £12, the second; £16, the third; and £20, the fourth. Nurses who have paid the premium, if they remain a fourth year, receive £24.

LECTURES AND CLASSES.

A comprehensive scheme of lectures and classes is in force.

FIRST YEAR.

A course of lectures is given by the Matron, and eight classes are held by four of the Ward Sisters, each Sister taking a class of five or six nurses. These classes include instruction in bandaging, in making poultices, leeching,

[previous page](#)

[next page](#)